

# Office Coffee Point of Use Filtered Water



**THE MADISON COUNTY  
FOOD & BEVERAGE CO.**

1-888-291-8211

WWW.MADISONCOUNTY.CA

43 ONTARIO ST., ORILLIA, ON. L3V 6H1

## Quantum Point of Use Water Coolers *The Engineering of Premium Quality Water*



**Quantum Point of Use** water cooler conversion kits provide you with unlimited clean, great tasting water right at your finger tips!

- Unlimited “bottled quality” water at your finger tips
- Environmentally friendly alternative to bottles
- Cost effective solution, fixed monthly cost regardless of consumption

### *Technological Elegance*

**Quantum Solutions** merge state of the art filtration with sleek, modern designed water coolers that will shine in any location. A Quantum system is quite simply the best in water filtration design and function. When it comes to your water, why settle for anything less?

**Quantum Filtration Systems** are made for those who appreciate simplicity and quality as much as good health. Versatility, upgradeability, in seconds, standing up, without any tools.

**Quantum Filters** remove cyst, lead, asbestos, particulate, chlorine off taste and odor reduction, while retaining essential minerals found naturally in water. Quantum 1000 & 2000 Systems deliver the kind of performance professionals expect.

*So your water is as healthy as it tastes, It's water filtration you can trust ...*

*The kind that will never go out of style.*



Made in Canada

# Office Coffee Point of Use Filtered Water



**THE MADISON COUNTY  
FOOD & BEVERAGE CO.**

1-888-291-8211

WWW.MADISONCOUNTY.CA

43 ONTARIO ST., ORILLIA, ON. L3V 6H1

## Quantum Counter Top Water Coolers

*The Engineering of Premium Quality Water*

**Commercial grade quality**, sturdy yet attractive construction

Includes our patented double float system

### Features

- Simplicity personified!
- Easy to use, easy to install, EASY TO SANITIZE (Tank access in less than 5 seconds!)
- Space saving 12" inch foot print
- 17 ¾" height - 31 lbs.
- Full size compressor for faster chilling
- Sturdy "anodized" aluminum construction
- Now available in both brushed chrome or nickel finish
- Adjustable cold water thermostat
- Stainless steel reservoir
- **NEW 7-year warranty on the compressor**
- **NEW 2-year warranty on remaining parts**
- "Filter-ready" bracket on the back to accommodate a wide range of filter models
- 3/8" John Guest connector fitting for quick hook-up



Brushed Chrome Finish  
Part # CT



Made in Canada

### Anodized Aluminum – An Industry First!

We are the proud to be the first manufacturer to be using "Anodized" aluminum

**Durability** – anodizing is a reacted finish that is integrated with the underlying aluminum for total bonding and unmatched adhesion.

**Colour Stability** – Exterior anodic coatings provide good stability against UV rays

**Ease of Maintenance** – Rinsing with mild soap or water is all that is required to restore the surface to its original appearance.

Ambient Temp. Cel/Fah.	Water 10 deg. C (50 deg. F) LPH / GPH	Cups/hour 85 g. (3 oz.)	Cool & Cold LPH / GPH	Water 10 deg. C (50 deg. F) LPH / GPH	Cups/Hour 85 g. (3 oz.)	Water 74 deg. C (165 deg. F) LPH / GPH	Cups/Hour 170 g. (6 oz.)
21 / 70	6.7 / 1.8	79	18 / 5	3.8 / 1.0	45	7.7 / 2.0	45
27 / 80	4.7 / 1.2	55	18 / 5	1.8 / 0.5	21	8.0 / 2.1	47
32 / 90	2.6 / 0.7	31	18 / 5	1.1 / 0.3	13	8.5 / 2.2	50
38 / 100	1.8 / 0.5	21	18 / 5	0.7 / 0.2	8	9.4 / 2.5	55



# Office Coffee Point of Use Filtered Water



**THE MADISON COUNTY  
FOOD & BEVERAGE CO.**

1-888-291-8211

WWW.MADISONCOUNTY.CA

43 ONTARIO ST., ORILLIA, ON. L3V 6H1

## Quantum Low Pro Point of Use Water Coolers *The Engineering of Premium Quality Water*

Quantum Low Profile (Low Pro) Point of Use Coolers Provide an Attractive European Design with Simplicity of Design and Ease of Maintenance.

### Exceptional Simplicity

- Quantum Systems are easy to install and service using John Guest quick connect/disconnect fittings
- Filter ready bracket provided on the back for quick and easy installation
- Dependability – our double float system ensures unlimited water at your finger tips
- **Seven year warranty on the sealed refrigeration, two years on all remaining parts**
- Sleek modern design available with ice cold, cool and hot water options



Model FC  
Model WC

### Features

- Extra large 2 litre “cold” and 1 litre “cool” water tank capacity
- 33% more capacity than traditional coolers
- High flow faucets provide fast servings
- All parts are dishwasher safe
- Removable reservoir makes sanitizing quick and easy
- Quick quarter turn spigot removal
- Available in “Hot & Cold” and “Cool & Cold”
- One universal cup dispenser, which loads from the top or the bottom
- 43 1/2” tall – 35 lbs.
- **Available in Silver, Charcoal and White**



Made in Canada



Ambient Temp. Cel/Fah.	Water 10 deg. C (50 deg. F) LPH / GPH	Cups/hour (3 oz.)	Cool & Cold LPH / GPH	Water 10 deg. C (50 deg. F) LPH / GPH	Cups/Hour 85 g. (3 oz.)	Water 74 deg. C (165 deg. F) LPH / GPH	Cups/Hour 170 g. (6 oz.)
21 / 70	6.7 / 1.8	79	18 / 5	3.8 / 1.0	45	7.7 / 2.0	45
27 / 80	4.7 / 1.2	55	18 / 5	1.8 / 0.5	21	8.0 / 2.1	47
32 / 90	2.6 / 0.7	31	18 / 5	1.1 / 0.3	13	8.5 / 2.2	50
38 / 100	1.8 / 0.5	21	18 / 5	0.7 / 0.2	8	9.4 / 2.5	55



# Office Coffee Point of Use Filtered Water



**THE MADISON COUNTY  
FOOD & BEVERAGE CO.**

1-888-291-8211

WWW.MADISONCOUNTY.CA

43 ONTARIO ST., ORILLIA, ON. L3V 6H1

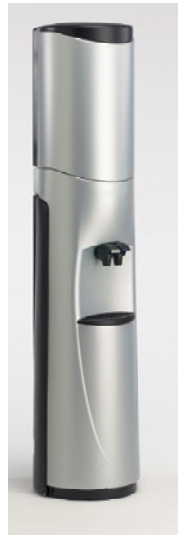
## Quantum Tall Point of Use Water Coolers *The Engineering of Premium Quality Water*

Quantum Tall Point of Use Coolers and conversion kits are so flexible; you can convert an existing bottled water cooler in minutes or add additional water care components, to an existing installation, in order to meet site specific needs.

*Quantum Systems are built “filter-ready”. All the components are factory installed for you*

### Exceptional Simplicity

- Quantum Systems are easy to install and service using John Guest quick connect/disconnect fittings
- Service accessibility and filter maintenance is done in minutes, standing up. Everything is at eye level!
- Upgrade the “Filter Tree” with additional filtration components using nothing more than a screwdriver
- Dependability – our double float system ensures unlimited water at your finger tips
- **Seven year warranty on the sealed refrigeration, two years on all remaining parts**
- Sleek modern design available with ice cold, cool and hot water options



Model DPC

### Features

- Extra large 2 litre “cold” and 1 litre “cool” water tank capacity
- 33% more capacity than traditional coolers
- High flow faucets provide fast servings
- All parts are dishwasher safe
- Removable reservoir makes sanitizing quick and easy
- Quick quarter turn spigot removal
- Available in “Hot & Cold” and “Cool & Cold”
- Easy cartridge change, simply lift off the cover, twist out the cartridge and snap in a new one
- One universal cup dispenser, which loads from the top or the bottom
- 58 1/4” tall – 35 lbs.
- **Available in Silver, Charcoal and White**



Ambient Temp. Cel/Fah.	Water 10 deg. C (50 deg. F) LPH / GPH	Cups/hour 85 g. (3 oz.)	Cool & Cold LPH / GPH	Water 10 deg. C (50 deg. F) LPH / GPH	Cups/Hour 85 g. (3 oz.)	Water 74 deg. C (165 deg. F) LPH / GPH	Cups/Hour 170 g. (6 oz.)
21 / 70	6.7 / 1.8	79	18 / 5	3.8 / 1.0	45	7.7 / 2.0	45
27 / 80	4.7 / 1.2	55	18 / 5	1.8 / 0.5	21	8.0 / 2.1	47
32 / 90	2.6 / 0.7	31	18 / 5	1.1 / 0.3	13	8.5 / 2.2	50
38 / 100	1.8 / 0.5	21	18 / 5	0.7 / 0.2	8	9.4 / 2.5	55



Made in Canada



# Office Coffee Point of Use Filtered Water



**THE MADISON COUNTY  
FOOD & BEVERAGE CO.**

1-888-291-8211

WWW.MADISONCOUNTY.CA

43 ONTARIO ST., ORILLIA, ON. L3V 6H1

## Quantum 1000 Water Filtration

The Engineering of Premium Quality Water

A Quantum system is quite simply the best in water filtration design and function. You appreciate the quality that comes with commercial grade equipment, so when it comes to your water, why settle for anything less? Quantum systems are made for those who appreciate commercial quality as much as good health. Our signature metal exterior is both durable and attractive and sealed inside is an exclusive Precoat technology delivering the kind of NSF-certified performance professionals expect.

### Commercial Grade Quality

When using this product, you join the company of world leaders like McDonald's, 7-Eleven, A&W, Second Cup Coffee, and Cineplex Odeon, to name a few. Our metal canister delivers commercial grade durability and quality and protects the filter system from splitting or bursting. It's lined with a food-grade polymer that prevents the water from coming in contact with the metal. Quantum filters rid your water of chlorine, rust, asbestos fibres, and other contaminants while retaining essential minerals found naturally in water. So your water is as healthy as it tastes. It's water filtration you can trust – the kind that will never go out of style.

### NSF Certification

The Quantum 1000 Drinking Water System provides absolute 1/2 micron filtration (1/50,000<sup>th</sup> of an inch) removing 99.9% of Chlorine off tastes and odours, particles of dirt, lead, asbestos, turbidity and harmful cysts such as Cryptosporidium and Giardia Lamblia.

The NSF Seal is your guarantee of Quality. NSF International is the leading independent testing and validation organization which sets standards for drinking water systems. NSF has given the Quantum 1000 its highest rating.

Standard No. 42: Aesthetic Effects/Chemical Unit, Taste, Odour & Chlorine Reduction: Class I

Standard No. 42: Mechanical Filtration Unit, Particulate Reduction, Class I, 99.9% at 1/2 micron

Standard No. 53: Health Effects/Turbidity Reduction/Cyst Reduction/Asbestos Reduction/Lead Reduction

For more information on NSF listings, please visit [www.nsf.org](http://www.nsf.org) or call us at 1-888-Danamark and ask for technical support ext. 235, or email us at [technicalsupport@danamark.com](mailto:technicalsupport@danamark.com)

### Specifications

Temperature:	Cold water supply only, max. 100 deg. F (38 deg. C)
Pressure:	10 to 125 psi (0.7 to 8.6 bar), non shock
Flow rate:	Controlled to 0.5 gpm/ 1.9 L/min. (for lead reduction)
Capacity:	750 US gallons
Dimensions:	5"W x 5"D x 15"H (13 x 13 x 38 cm)

